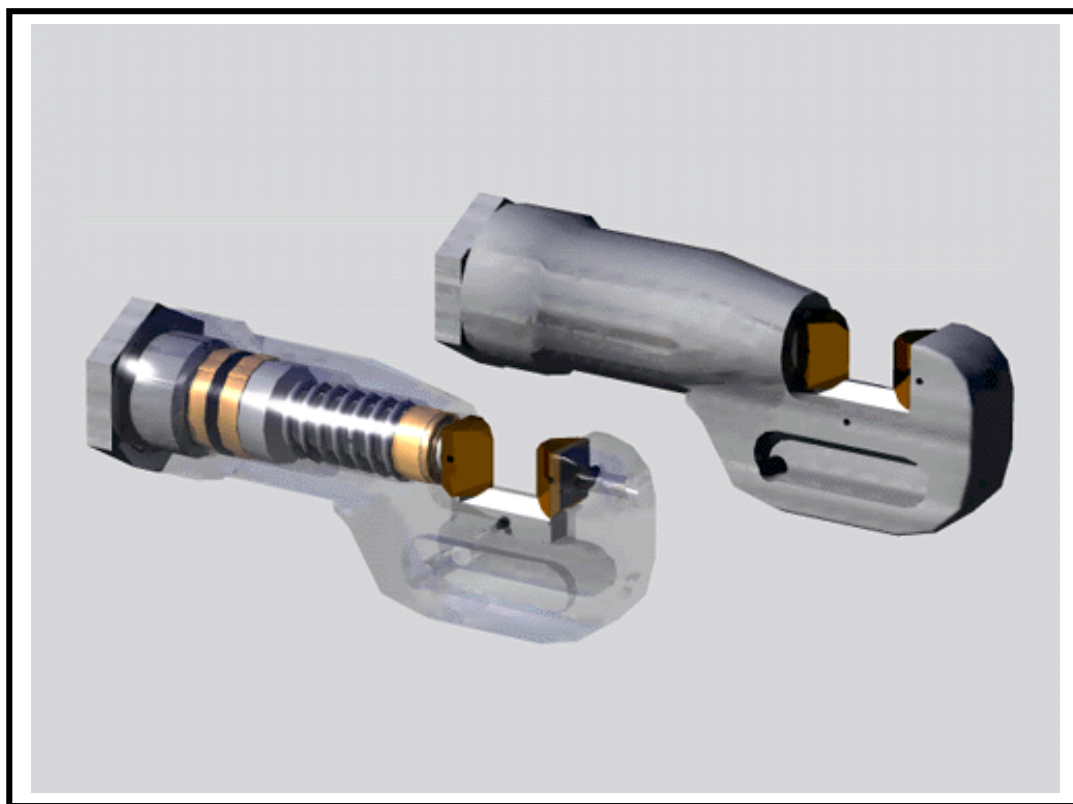




## *PRODUCT BULLETINS*

*2000*



### **Corporate Headquarters**

Vale Industries Inc.  
122 Simonds Ave.,  
DeKalb, Illinois 60115-3992  
Phone: (815) 756-2426  
Fax: (815) 756-2735  
E-mail: [info@vale-industries.com](mailto:info@vale-industries.com)  
[www.vale-industries.com](http://www.vale-industries.com)

### **International Division**

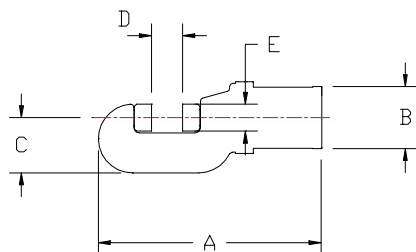
Vale Industries Inc.  
115 S. 4<sup>th</sup> Avenue.  
St. Charles, Illinois 60174-2145  
Phone: (630) 584-1900  
Fax: (630) 584-2599



## Hydraulic Rod & Bar Shears

### Here are the 8 features that make Vale Shears the standard for the industry:

1. Mill-type BOLTED CAP CONSTRUCTION for easy maintenance.
2. SUPER SEALING, with only TEFLON parts touching the cylinder bore.
3. BRONZE-FILLED TEFLON WEAR RING prevents piston from touching cylinder bore.
4. ALL STEEL SUSPENSION RING for maximum safety.
5. AXIAL RAM GUIDE KEY for more accurate blade cuts.
6. SINGLE SPRING CONSTRUCTION for longer life.
7. HIGH STRENGTH BRONZE RAM BUSHING.
8. ALLOY STEEL HEAT-TREATED and HARD PLATED single piece ram and piston for simplicity and accuracy. Requires one less seal.



### Vale gives you even more:

- TWIST LOCK electrical connector with BOOT PROTECTOR.
- HEAVY DUTY trigger type switch, 15 AMP rated.
- HIGH STRENGTH ALUMINUM switch handle with integral trigger guard for greater safety.
- Heavy-walled cylinder, 4,500PSI working pressure with 4 to 1 SAFETY FACTOR.
- HIGH STRENGTH ALLOY heat treated "C" frame.

MODEL	CAPACITY DIA.	SHEAR STRENGTH PSI @	BLADE #	WEIGHT LB.	DIM A In"	DIM B In"	DIM C In"	DIM D In"	DIM E In"
V10-C1539	0.62	60,000	A-1502	17.0	9.96	3.0	2.68	0.75	1.19
V15-D1507	0.81	60,000	A-1502	23.0	10.52	3.93	2.68	0.88	1.19
V35-D1508	1.25	55,000	A-1502	50.0	12.62	5.68	3.07	1.33	1.19
V70-D1509	1.62	60,000	A-1503	121.0	16.41	7.75	4.88	1.81	1.75
V90-D1570	2.00	60,000	A-1501	268.0	24.00	9.00	7.25	2.25	2.25
V135-D1708	2.50	60,000	A-3716	600.0	31.00	12.38	10.00	2.75	2.75
V250-D1510	1.81	20,000	A-1731	75.0	18.75	5.18	4.62	2.62	2.25
V350-D1511	2.50	20,000	A-1505	131.0	24.00	5.68	6.12	3.50	2.75
V700-D1512	3.00	20,000	A-1506	269.0	30.76	7.75	7.50	4.50	3.50
V900-D1600	3.50	20,000	A-1920	454.0	37.47	9.00	9.75	5.50	5.00

**NOTE:** See Bulletin 170 for cycle times. All information subject to change without notice.

#### Corporate Headquarters

Vale Industries Inc.  
122 Simonds Ave.,  
DeKalb, Illinois 60115-3992  
Phone: (815) 756-2426  
Fax: (815) 756-2735  
E-mail: [info@vale-industries.com](mailto:info@vale-industries.com)  
[www.vale-industries.com](http://www.vale-industries.com)

#### International Division

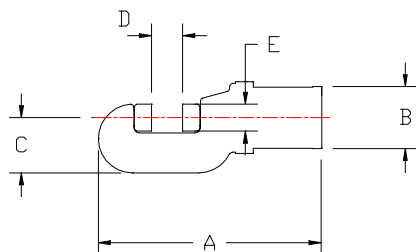
Vale Industries Inc.  
115 S. 4<sup>th</sup> Avenue.  
St. Charles, Illinois 60174-2145  
Phone: (630) 584-1900  
Fax: (630) 584-2599



## Hydraulic Rod & Bar Shears (Metric Information)

### Here are the 8 features that make Vale Shears the standard for the industry:

9. Mill-type BOLTED CAP CONSTRUCTION for easy maintenance.
10. SUPER SEALING, with only TEFLON parts touching the cylinder bore.
11. BRONZE-FILLED TEFLON WEAR RING prevents piston from touching cylinder bore.
12. ALL STEEL SUSPENSION RING for maximum safety.
13. AXIAL RAM GUIDE KEY for more accurate blade cuts.
14. SINGLE SPRING CONSTRUCTION for longer life.
15. HIGH STRENGTH BRONZE RAM BUSHING.
16. ALLOY STEEL HEAT-TREATED and HARD PLATED single piece ram and piston for simplicity and accuracy. Requires one less seal.



### Vale gives you even more:

- TWIST LOCK electrical connector with BOOT PROTECTOR.
- HEAVY DUTY trigger type switch, 15 AMP rated.
- HIGH STRENGTH ALUMINUM switch handle with integral trigger guard for greater safety.
- Heavy-walled cylinder, 276 Bar working pressure with 4 to 1 SAFETY FACTOR.
- HIGH STRENGTH ALLOY heat treated "C" frame.

MODEL	CAPACITY DIA.	SHEAR STRENGTH BAR @	BLADE #	WEIGHT Kg.	DIM A mm	DIM B mm	DIM C mm	DIM D mm	DIM E mm
V10-C1539	15.75	4137	A-1502	6.8	253	76	68	19	30
V15-D1507	20.57	4137	A-1502	10.0	267	100	68	22	30
V35-D1508	31.75	3792	A-1502	23.6	320	144	78	34	30
V70-D1509	41.27	4137	A-1503	52.2	417	197	124	46	44
V90-D1570	50.8	4137	A-1501	121.2	610	229	184	57	57
V135-D1708	63.0	4137	A-3716	272.0	787	314	254	70	70
V250-D1510	45.97	1379	A-1731	33.6	476	132	117	67	57
V350-D1511	63.5	1379	A-1505	59.0	610	144	155	89	70
V700-D1512	76.2	1379	A-1506	120.3	781	197	190	114	89
V900-D1600	88.9	1379	A-1920	205.9	952	229	248	140	127

**NOTE:** See Bulletin 170 for cycle times. All information subject to change without notice.

#### Corporate Headquarters

Vale Industries Inc.  
122 Simonds Ave.,  
DeKalb, Illinois 60115-3992  
Phone: (815) 756-2426  
Fax: (815) 756-2735  
E-mail: [info@vale-industries.com](mailto:info@vale-industries.com)  
[www.vale-industries.com](http://www.vale-industries.com)

#### International Division

Vale Industries Inc.  
115 S. 4<sup>th</sup> Avenue.  
St. Charles, Illinois 60174-2145  
Phone: (630) 584-1900  
Fax: (630) 584-2599

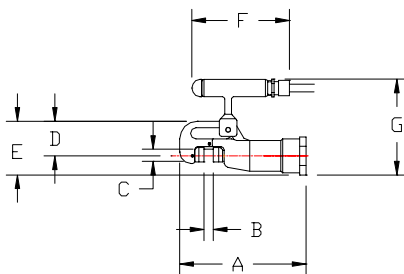


## Lightweight Bar Shears

### 5 Pound Bar Shear cuts ½ inch! Totally Portable.

Vale's new Bar shear range offers true portability in the bar shearing application. The shear combined with a Battery Power unit (See Bulletin 145), provides unmatched flexibility and real mobility to replace those awkward bolt cutters.

The four models offered cut both ferrous and non-ferrous materials ranging from ½" maximum to 1 3/8" maximum. Your operators (and their shoulders) will appreciate this. The shears are provided with an integral switch handle that provides easy one handed operation of the tool.



### Vale gives you even more:

- Heat Treated Alloy Steel Construction
- Same Heavy Duty Design Criteria as our larger Steel Mill Shears.
- Bronze Ram Bushing and Wear Ring.
- Replaceable, Identical Blades.
- Trigger guard for safety.
- Hard plated Ram for long life.
- C Frame design eliminates the awkward 'Bale' found on other portable units.

MODEL	CAPACITY DIA.	SHEAR STRENGTH PSI @	WEIGHT	DIM A	DIM B	DIM C	DIM D	DIM E	DIM F	DIM G
VHS5-C2105	0.5 in. 12.7mm	60,000 (4137 Bar)	5 Lbs. 2.5 Kg.	7.25 in. 185mm	0.5 in. 12.7mm	0.88 in. 22mm	2 in. 50mm	3 in. 75mm	6.25 in. 160mm	5.75 in. 145mm
VHS15-C2106	0.81 in. 20mm	60,000 (4137 Bar)	9 Lbs. 4 Kg.	10.5 in. 265mm	0.88 in. 22mm	1.13 in. 28mm	2.88 in. 75mm	4.25 in. 110mm	6.25 in. 160mm	6.13 in. 155mm
VHS50-C2220	0.81 in. 20mm	20,000 (1379 Bar)	6.5 Lbs. 2.9 Kg.	8.68 in. 220mm	1.18 in. 30mm	0.93 in. 24mm	1.97 in. 50mm	3.05 in. 77mm	6.25 in. 160mm	5.80 in. 147mm
VHS150-C2224	1.38 in. 35mm	20,000 (1379 Bar)	11.5 Lbs. 5.3 Kg.	13.0 in. 330mm	1.63 in. 41mm	1.50 in. 38mm	2.86 in. 73mm	4.25 in. 110mm	6.25 in. 160mm	6.13 in. 155mm

**NOTE:** See Bulletin 175 for cycle times. All information subject to change without notice.

#### Corporate Headquarters

Vale Industries Inc.  
122 Simonds Ave.,  
DeKalb, Illinois 60115-3992  
Phone: (815) 756-2426  
Fax: (815) 756-2735  
E-mail: [info@vale-industries.com](mailto:info@vale-industries.com)  
[www.vale-industries.com](http://www.vale-industries.com)

#### International Division

Vale Industries Inc.  
115 S. 4<sup>th</sup> Avenue.  
St. Charles, Illinois 60174-2145  
Phone: (630) 584-1900  
Fax: (630) 584-2599



## Square Cut Shears

**For neat, square cuts here are the 8 features that make Vale Shears the standard for the industry:**

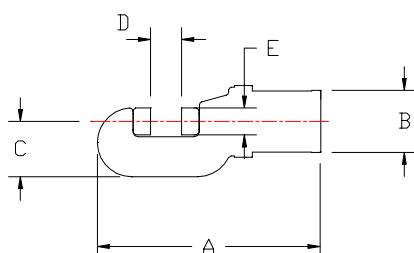
17. Mill-type BOLTED CAP CONSTRUCTION for easy maintenance.
18. SUPER SEALING, with only TEFLON parts touching the cylinder bore.
19. BRONZE-FILLED TEFLON WEAR RING prevents piston from touching cylinder bore.
20. ALL STEEL SUSPENSION RING for maximum safety.
21. AXIAL RAM GUIDE KEY for more accurate blade cuts.
22. SINGLE SPRING CONSTRUCTION for longer life.
23. HIGH STRENGTH BRONZE RAM BUSHING.
24. ALLOY STEEL HEAT-TREATED and HARD PLATED single piece ram and piston for simplicity and accuracy. Requires one less



Normal "Pinch" Cut



Square Cut



**Vale gives you even more:**

- TWIST LOCK electrical connector with BOOT PROTECTOR.
- HEAVY DUTY trigger type switch, 15 AMP rated.
- HIGH STRENGTH ALUMINUM switch handle with integral trigger guard for greater safety.
- Heavy-walled cylinder, 4,500 PSI working pressure with 4 to 1 SAFETY FACTOR.
- HIGH STRENGTH ALLOY heat treated "C" frame.
- FOUR SHEARING EDGES on each blade for maximum life.

MODEL	CAPACITY DIA. In"	SHEAR STRENGTH PSI @	BLADE #	WEIGHT LB.	DIM A In"	DIM B In"	DIM C In"	DIM D In"	DIM E In"
V15SC-D1685	0.81	60,000	A-3013	45.0	11.12	3.93	3.06	0.88	1.12
V35SC-D1580	1.25	55,000	A-1750	74.0	15.5	6.5	5.0	1.38	1.62
V70SC-D1652	1.62	60,000	A-2731	235.0	20.88	7.75	5.88	1.94	2.0

**NOTE:** See Bulletin 170 for cycle times. All information subject to change without notice.

### Corporate Headquarters

Vale Industries Inc.  
122 Simonds Ave.,  
DeKalb, Illinois 60115-3992  
Phone: (815) 756-2426  
Fax: (815) 756-2735  
E-mail: [info@vale-industries.com](mailto:info@vale-industries.com)  
[www.vale-industries.com](http://www.vale-industries.com)

### International Division

Vale Industries Inc.  
115 S. 4<sup>th</sup> Avenue.  
St. Charles, Illinois 60174-2145  
Phone: (630) 584-1900  
Fax: (630) 584-2599



## Square Cut Shears (Metric Information)

**For neat, square cuts here are the 8 features that make Vale Shears the standard for the industry:**

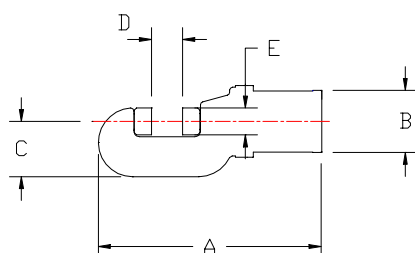
25. Mill-type BOLTED CAP CONSTRUCTION for easy maintenance.
26. SUPER SEALING, with only TEFLON parts touching the cylinder bore.
27. BRONZE-FILLED TEFLON WEAR RING prevents piston from touching cylinder bore.
28. ALL STEEL SUSPENSION RING for maximum safety.
29. AXIAL RAM GUIDE KEY for more accurate blade cuts.
30. SINGLE SPRING CONSTRUCTION for longer life.
31. HIGH STRENGTH BRONZE RAM BUSHING.
32. ALLOY STEEL HEAT-TREATED and HARD PLATED single piece ram and piston for simplicity and accuracy. Requires one less



Normal "Pinch" Cut



Square Cut



### Vale gives you even more:

- TWIST LOCK electrical connector with BOOT PROTECTOR.
- HEAVY DUTY trigger type switch, 15 AMP rated.
- HIGH STRENGTH ALUMINUM switch handle with integral trigger guard for greater safety.
- Heavy-walled cylinder, 310 BAR working pressure with 4 to 1 SAFETY FACTOR.
- HIGH STRENGTH ALLOY heat treated "C" frame.
- FOUR SHEARING EDGES on each blade for maximum life.

MODEL	CAPACITY DIA.	SHEAR STRENGTH BAR @	BLADE #	WEIGHT Kg.	DIM A mm	DIM B mm	DIM C mm	DIM D mm	DIM E mm
V15SC-D1685	20.57	4137	A-3013	20.0	282	100	78	22	28
V35SC-D1580	31.75	3792	A-1750	33.0	394	144	127	35	41
V70SC-D1652	41.27	4137	A-2731	107.0	530	197	149	49	51

**NOTE:** See Bulletin 170 for cycle times. All information subject to change without notice.

#### Corporate Headquarters

Vale Industries Inc.  
122 Simonds Ave.,  
DeKalb, Illinois 60115-3992  
Phone: (815) 756-2426  
Fax: (815) 756-2735  
E-mail: [info@vale-industries.com](mailto:info@vale-industries.com)  
[www.vale-industries.com](http://www.vale-industries.com)

#### International Division

Vale Industries Inc.  
115 S. 4<sup>th</sup> Avenue.  
St. Charles, Illinois 60174-2145  
Phone: (630) 584-1900  
Fax: (630) 584-2599





## Rod Straighteners and Benders

### Rod Straighteners



Ideal for straightening the leading end of coiled stock for easy insertion into a cold heading or wire drawing machine. Simplest operation is to suspend the tool with a counterbalancer over the coiled material. Each operation straightens approximately 9 inches of stock. Simply sliding the tool down the coil and pulling the trigger straightens another 9 inches etc.

That's not all.

By mounting the rod straightener to a table, either vertically or horizontally, and using a foot switch, you have an inexpensive utility press. When ordering a straightener the ram adapters must be ordered separately. See chart.

Straightener	Anvil	Ram Set
V-10RS	N/A	A-1500
V-25RS	A-1754	A-1755

MODEL	CAPACITY DIA.	SHEAR STRENGTH PSI @	WEIGHT	DIM A	DIM B	DIM C	DIM D	DIM E
V10RS-D1506	1.5 in. 38mm	60,000 (4137 Bar)	25 Lbs. 11.4 Kg.	13.2 in. 335mm	3.9 in. 99 mm	2.5 in. 64mm	2.2 in. 56mm	1.3 in. 33mm
V25RS-D1542	2.0 in. 51mm	60,000 (4137 Bar)	85 Lbs. 38.6 Kg.	19.3 in. 490mm	5.2 in. 132mm	4.6 in. 117mm	3.5 in. 90mm	2.3 in. 58mm

**NOTE:** See Bulletin 170 for cycle times. All information subject to change without notice.

### Rod Benders

The Rod Bender is a variation of the straightener, which bends the rod. It has a wide range of applications where portability is important, including re-coiling bar. Rod benders are available in V-10 and V-25 models with capacities that are identical to the straighteners.

### Rod Markers

Another variation of the Rod Straightener is the Rod Marking tool. Using standard steel stamps to provide flexibility, the tool can be used in such applications as heat number marking, etc. on the bar.



### Corporate Headquarters

Vale Industries Inc.  
122 Simonds Ave.,  
DeKalb, Illinois 60115-3992  
Phone: (815) 756-2426  
Fax: (815) 756-2735  
E-mail: [info@vale-industries.com](mailto:info@vale-industries.com)  
[www.vale-industries.com](http://www.vale-industries.com)

### International Division

Vale Industries Inc.  
115 S. 4<sup>th</sup> Avenue.  
St. Charles, Illinois 60174-2145  
Phone: (630) 584-1900  
Fax: (630) 584-2599

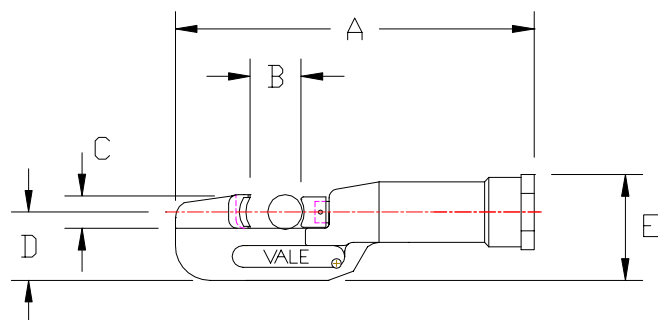


## Lightweight Rod Straightener

### 7 Pound Rod Straightener: Straightens one inch stock, totally portable

Vale's new Lightweight Rod Straightener offers true portability in the straightening application. The tool combined with a Battery Power unit (See Bulletin 145), provides unmatched flexibility and real mobility to straighten the leading edge of coiled stock.

The unit has a maximum capacity of one inch diameter and provides unmatched one handed operation.



### Vale gives you even more:

- Heat Treated Alloy Steel Construction
- Same Heavy Duty Design Criteria as our larger Mill Quality Rod Straighteners.
- Bronze Ram Bushing and Wear Ring.
- Replaceable Ram Adapter.
- Trigger guard for safety.
- Hard plated Ram for long life.

MODEL	CAPACITY DIA.	SHEAR STRENGTH PSI @	WEIGHT	DIM A	DIM B	DIM C	DIM D	DIM E
VHS5RS-C2118	1.0 in. 25.4mm	60,000 (4137 Bar)	7 Lbs. 3.2 Kg.	10.0 in. 254mm	1.0 in. 25.4 mm	1.0 in. 25.4mm	2.0 in. 50.8mm	3.0 in. 76.2mm

**NOTE:** See Bulletin 175 for cycle times. All information subject to change without notice.

#### Corporate Headquarters

Vale Industries Inc.  
122 Simonds Ave.,  
DeKalb, Illinois 60115-3992  
Phone: (815) 756-2426  
Fax: (815) 756-2735  
E-mail: [info@vale-industries.com](mailto:info@vale-industries.com)  
[www.vale-industries.com](http://www.vale-industries.com)

#### International Division

Vale Industries Inc.  
115 S. 4<sup>th</sup> Avenue.  
St. Charles, Illinois 60174-2145  
Phone: (630) 584-1900  
Fax: (630) 584-2599





## Power Units, 5,000 P.S.I.



### Rugged – Dependable – Economical

Vale Industries Inc. range of 5,000 P.S.I. or Mill environment Power units have been in production for many years. Characterized as rugged, dependable and cost effective solutions to your power needs. Superior engineering means you will benefit from Vale's extra margin of safety built into all Vale Power Units. All of these power units are rated at 5,000 P.S.I. continuous duty yet are operated at only 4,500 P.S.I. This "derating" gives you a wider operating safety margin than any other comparable tool on the market.

To ensure that a cycle time right for your application is available a wide range of units are produced. Please refer to the Cycle Time Bulletin #170 for details.

### Outstanding Vale Features

- 1: All components possible are mounted on top of reservoir for ease of maintenance and replacement.
- 2: Direct driven pumps connected to motors through flexible couplings.
- 3: Manifold mounted valves for easy field replacement or conversion, eliminating exposed piping and reducing the chance of oil leaks.
- 4: Oil level site gauge.
- 5: Safety relief valve.



Model	Part #	# Tools	H.P.	G.P.M.	Reservoir Capacity	Voltage Main	Voltage Control	Length in"	Width in"	Height in"
V-2	C-2104	1	1	0.5	2.5 Gal.	110	110	14.5	9.5	19.5
V-4	C-2128	1	3	1.5	5.0 Gal.	110	110	14.5	9.5	25
V-5	D-1500	1	7.5	5.5	13.0 Gal.	230-600	24, 110	36	15	24
V-9	D-1502	1	15	11.0	30.0 Gal.	230-600	24, 110	44	34	35
V-25	D-1504	1	40	25.0	75.0 Gal.	230-600	24, 110	60	27	42

Note: For cycle times refer to Bulletin 170, multi-tool units available. All information subject to change without notice.

#### Corporate Headquarters

Vale Industries Inc.  
122 Simonds Ave.,  
DeKalb, Illinois 60115-3992  
Phone: (815) 756-2426  
Fax: (815) 756-2735  
E-mail: [info@vale-industries.com](mailto:info@vale-industries.com)  
[www.vale-industries.com](http://www.vale-industries.com)

#### International Division

Vale Industries Inc.  
115 S. 4<sup>th</sup> Avenue.  
St. Charles, Illinois 60174-2145  
Phone: (630) 584-1900  
Fax: (630) 584-2599



## Power Units, 10,000 P.S.I.



### Rugged – Dependable – Economical

Vale Industries Inc. range of 10,000 P.S.I. Power units have been in production for many years. Characterized as rugged, dependable and cost effective solutions to your power needs. All of these power units are rated at 10,000 P.S.I. continuous duty yet can operate at a pressure setting. This “derating” gives you a wider operating safety margin than any other comparable tool on the market.

To ensure that a cycle time right for your application is available a wide range of units are produced. Please refer to the Cycle Time Bulletin #175 for details.

### Outstanding Vale Features

- 1: All components possible are mounted on top of reservoir for ease of maintenance and replacement.
- 2: Direct driven pumps connected to motors through flexible couplings.
- 3: Manifold mounted valves for easy field replacement or conversion, eliminating the chance of oil leaks.
- 4: Oil level site gauge.
- 5: Safety relief valve.



Model	Part #	# Tools	H.P.	G.P.M.	Reservoir Capacity	Voltage Main	Voltage Control	Length in"	Width in"	Height in"
VPB-1	A-4373	1	N/A	0.055	38 cu/in	Battery	N/A	13.9	5.2	11.0
VPB-2	A-4372	1	N/A	0.055	38cu/in	Battery	N/A	13.9	5.2	11.0
VHP-1	C-2103	1	1	0.15	13.0 Gal.	110	24, 110	10.75	11.75	20.5
VHP-2	C-2139	1	3	0.5	30.0 Gal.	110-230	24, 110	15.5	15.5	26.0
VHP-3	C-2137	1	5	1.5	75.0 Gal.	230-600	24, 110	15.75	18.0	35.0

Note: For cycle times refer to Bulletin 175, multi-tool units available. All information subject to change without notice.

#### Corporate Headquarters

Vale Industries Inc.  
122 Simonds Ave.,  
DeKalb, Illinois 60115-3992  
Phone: (815) 756-2426  
Fax: (815) 756-2735  
E-mail: [info@vale-industries.com](mailto:info@vale-industries.com)  
[www.vale-industries.com](http://www.vale-industries.com)

#### International Division

Vale Industries Inc.  
115 S. 4<sup>th</sup> Avenue.  
St. Charles, Illinois 60174-2145  
Phone: (630) 584-1900  
Fax: (630) 584-2599



## Accessories



### *Switch Handles*

The VS-C1502 switch handle assembly incorporates the use of a heavy duty trigger type switch for actuation of the tool, and a short conductor cord with a quick release connector to attach it to the main conductor run from the power unit in question. Produced in Aluminum alloy for high strength, with a profiled pistol grip for comfort, the handle incorporates an integral trigger guard for safety. An alternate handle, the VS-C1591 can be used with the V-10 shear only when the tool is not suspended from a balancer.

### *Hot Cut Extension Nipple Adapters*

When it is necessary to cut coiled stock at elevated heights, the extension adapter is used. From approximately 36" from the cut. The extension also comes equipped with an auxiliary and adjustable handgrip, which aids in the easy manipulation of the tool.

### *High Pressure Hose*

All Vale hose assemblies are pressure rated for either 5,000 P.S.I. or 10,000 P.S.I. depending on the model. Burst pressure for these hoses run at three times the rated pressure and all are available in various diameters from 3/8" to 3/4" with special diameters and lengths available on request.

### *Electric Cord Sets*

Vale electric cord sets are produced to be mated with standard Vale tools and power units and directly relate to the hose. All connectors are protected from contamination and moisture by mating neoprene jackets.

### *Shear Guards*

The shear guard provides a means of protecting the operator against possible injury to hands or fingers by completely enclosing the opening between the blades. The shearing of rod or bar can easily be accomplished by simply applying a slight pressure to the front of the guard, allowing the material to slide into position between the shear blades. After the cut has been accomplished the shear guard will automatically return to its original position by means of a return spring. Use of guards is recommended on all tools.



#### **Corporate Headquarters**

Vale Industries Inc.  
122 Simonds Ave.,  
DeKalb, Illinois 60115-3992  
Phone: (815) 756-2426  
Fax: (815) 756-2735  
E-mail: [info@vale-industries.com](mailto:info@vale-industries.com)  
[www.vale-industries.com](http://www.vale-industries.com)

#### **International Division**

Vale Industries Inc.  
115 S. 4<sup>th</sup> Avenue.  
St. Charles, Illinois 60174-2145  
Phone: (630) 584-1900  
Fax: (630) 584-2599



## Accessories II



### Tool Carts

The tool cart with boom was designed for use in applications where portability of the tool and power unit is desirable, such as trimming rod or wire coils in storage areas, or in critical operations for use as standby equipment. The tool is suspended from a cantilevered boom by means of a balancer. This combination allows for up to 80° of radial movement and 60" of vertical counterbalanced travel. The heavy-duty tool cart should be used with the V-90, V-350 and V-700 tools.

#### 2 Wheel Tool Cart

The VT-D1560 two wheel tool cart was designed for our smaller power units. It incorporates two heavy-duty rubber tires and can easily transport any of our smaller power units and tools, such as the V-2, VHP-1 and 2. This compact and fully portable system is an ideal package for those applications requiring occasional cutting or straightening in varied locations around the plant.

Model	Type	Weight Lbs.	Length	Boom Overhang	Width	Max Hook Height	Overall Height
VT-D1519	Single Boom	310	51.0	28.5	35.0	65.0	92.0
VT-D1520	Double Boom	360	51.0	28.5	35.0	65.0	92.0
VT-D1590	Heavy Duty	815	51.0	28.5	35.0	65.0	92.0
VT-D1560	2 Wheel	32	15.25	N/A	16.5	N/A	34.0

### Balancers

Vale heavy duty balancers feature smooth, even tension through the entire range of cable travel, simple external tension adjustment, and safe to handle cartridge main spring so that springs may be changed without danger to operating personnel. Changing tools and cables at the "job site" is both safe and simple with the Vale manual drum lock, standard on all models. Each balancer is equipped with a simple and sure safety lock which prevents the load from dropping should a main spring lose tension. All models are constructed of high tensile aluminum for ease of handling and are permanently lubricated at the factory, assuring years of trouble-free operation.

Model	Capacity Lbs	Capacity Kg	Travel Ft	Travel Mtrs	Weight Lbs	Weight Kg
V20J-A1529	15-25	6-11	7	2.1	28	13
V30J-A1530	25-35	11-16	7	2.1	28	13
V60J-A1531	55-70	24-32	7	2.1	29	13
V90J-A1620	80-90	36-41	7	2.1	29	13
V130K-A1649	125-135	57-61	7	2.1	48	22
V150K-A1533	145-155	65-70	7	2.1	49	22
V250L-A1535	235-250	106-113	7	2.1	79	35
V280L-A1909	265-280	120-127	7	2.1	79	35

Note: All information subject to change without notice.

#### Corporate Headquarters

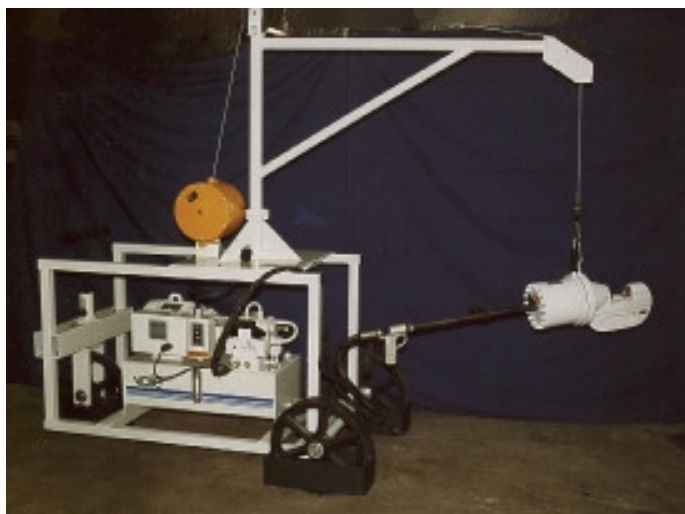
Vale Industries Inc.  
122 Simonds Ave.,  
DeKalb, Illinois 60115-3992  
Phone: (815) 756-2426  
Fax: (815) 756-2735  
E-mail: [info@vale-industries.com](mailto:info@vale-industries.com)  
[www.vale-industries.com](http://www.vale-industries.com)

#### International Division

Vale Industries Inc.  
115 S. 4<sup>th</sup> Avenue.  
St. Charles, Illinois 60174-2145  
Phone: (630) 584-1900  
Fax: (630) 584-2599



## Rough Terrain Tool Cart



### *Rough Terrain Tool Cart*

This Tool Cart was designed for plants with uneven floors, such as metal decked mezzanines, where conventional toolcarts are difficult to control and also for applications where debris may be common place.

The three wheel design of the tool cart and the tiller steering provide for a positive directional control. The large diameter roller bearing wheels can easily roll over small objects and the reduced friction makes it easier to move the cart. Fenders keep the wheels from rolling over toes and are used to push larger objects from the path of the cart instead of jamming the wheels. All of the components are mounted as low in the frame as possible, to lower the center of gravity therefore minimizing the chances of tipping when the cart is being pushed quickly.

The Heavy duty version is essentially the same cart with added structure and counterbalance weight for our larger shears. It should be used with the V-900, V-135 and V-1350 shears.

Model	Type	Used With	Weight	Base Length	Boom Overhang	Width	Overall Height	Max Hook Height
D-1786	1 Boom	Up to V-700/90	520 Lbs	77"	35"	42"	92"	65"
D-1794	2 Boom	Up to V-700/90	590 Lbs	77"	35"	42"	92"	65"
D-1795	1 Boom Heavy Duty	V-900 V-135 V-1350	840 Lbs	77"	35"	42"	92"	65"

Note: All information subject to change without notice.

#### Corporate Headquarters

Vale Industries Inc.  
122 Simonds Ave.,  
DeKalb, Illinois 60115-3992  
Phone: (815) 756-2426  
Fax: (815) 756-2735  
E-mail: [info@vale-industries.com](mailto:info@vale-industries.com)  
[www.vale-industries.com](http://www.vale-industries.com)

#### International Division

Vale Industries Inc.  
115 S. 4<sup>th</sup> Avenue.  
St. Charles, Illinois 60174-2145  
Phone: (630) 584-1900  
Fax: (630) 584-2599





## Cycle Times, Standard Tools

Model	V-2		V-4		V-5		V-9		V-25	
Tool	Extend	Retract	Extend	Retract	Extend	Retract	Extend	Retract	Extend	Retract
V-10	2.8	1.0	1.0	1.0	0.2	1.0	X	X	X	X
V-15	4.2	2.0	1.4	2.0	0.3	2.0	X	X	X	X
V-35	12.5	3.0	4.2	3.0	1.1	3.0	0.5	3.0	X	X
V-70	X	X	10.8	6.0	3.0	6.0	1.5	6.0	0.6	6.0
V-90	X	X	X	X	4.0	8.0	2.0	8.0	1.0	8.0
V-135	X	X	X	X	5.0	10.0	3.0	10.0	2.0	10.0
V-250	X	X	5.8	4.0	1.6	4.0	0.8	4.0	0.3	4.0
V-350	X	X	X	X	2.8	6.0	1.4	6.0	0.6	6.0
V-700	X	X	X	X	7.0	8.0	3.5	8.0	1.4	8.0
V-900	X	X	X	X	11.0	12.0	5.5	12.0	2.2	12.0
V-1350	X	X	X	X	X	X	8.5	15.0	3.5	15.0
V-10RS	7.5	1.5	2.5	1.5	0.5	1.5	X	X	X	X
V-25RS	X	X	7.3	4.0	1.6	4.0	0.8	4.0	X	X
V-15SC	7.0	3.0	2.3	3.0	0.5	3.0	X	X	X	X
V-35SC	X	X	5.0	4.0	1.4	4.0	0.7	4.0	X	X
V-70SC	X	X	X	X	3.0	7.0	1.5	7.0	0.6	7.0

X = Not Recommended

All times are in seconds.

Note: Cycle times are based on full forward and return stroke of tool. Actual cutting times are normally faster as full stroke is usually not required for cutting materials cold. Return stroke of ram is based on a ½" I.D. 15 ft. hose length and cycle time will vary when other length or size hoses are used.

### Corporate Headquarters

Vale Industries Inc.  
122 Simonds Ave.,  
DeKalb, Illinois 60115-3992  
Phone: (815) 756-2426  
Fax: (815) 756-2735  
E-mail: [info@vale-industries.com](mailto:info@vale-industries.com)  
[www.vale-industries.com](http://www.vale-industries.com)

### International Division

Vale Industries Inc.  
115 S. 4<sup>th</sup> Avenue.  
St. Charles, Illinois 60174-2145  
Phone: (630) 584-1900  
Fax: (630) 584-2599





## Cycle Times, Lightweight Tools

Model	VPB-1		VPB-2		VHP-1		VHP-2		VHP-3	
Tool	Extend	Retract	Extend	Retract	Extend	Retract	Extend	Retract	Extend	Retract
<b>VHS-5</b>	4.0	Man.	4.0	1.0	1.5	0.5	0.5	0.5	0.2	0.5
<b>VHS-15</b>	15.0	Man.	15.0	2.5	5.5	1.0	1.7	1.0	0.6	1.0
<b>VHS-50</b>	4.5	Man.	4.5	1.2	3.0	0.8	0.9	0.8	0.3	0.8
<b>VHS-150</b>	17.0	Man.	17.0	3.5	6.5	1.8	2.5	1.8	1.0	1.8
<b>VHS-5RS</b>	4.5	Man.	4.5	1.2	3.0	0.8	0.9	0.8	0.3	0.8

All times are in seconds and subject to change without notice.

Note: Cycle times are based on full forward and return stroke of tool. Actual cutting times are normally faster as full stroke is usually not required for cutting materials cold. Return stroke of ram is based on a 3/8" I.D. 6 ft. hose length and cycle time will vary when other length or size hoses are used.

### Corporate Headquarters

Vale Industries Inc.  
122 Simonds Ave.,  
DeKalb, Illinois 60115-3992  
Phone: (815) 756-2426  
Fax: (815) 756-2735  
E-mail: [info@vale-industries.com](mailto:info@vale-industries.com)  
[www.vale-industries.com](http://www.vale-industries.com)

### International Division

Vale Industries Inc.  
115 S. 4<sup>th</sup> Avenue.  
St. Charles, Illinois 60174-2145  
Phone: (630) 584-1900  
Fax: (630) 584-2599



## Coil Compactors



### Easier Coil Handling

The Vale range of Coil Compactors offers a definite advantage to your material handling process. Coils are able to be stacked higher with safety and therefore saving storage space necessary.

### Save on Energy Expenses

When compacted, up to 30% more coils can be accommodated in every oven cycle.

## *Maintain Your Quality Image*

Your wire will arrive at your end customer in a much more professional manner. They will be neat and usable, not the monster “Slinky” so often associated with coiled wire.

### Optional Features

A: Self-unloading

	Light	Standard	Heavy
Maximum Force	11 Tons	25 Tons	41 Tons
Approximate Weight *	9,000 lbs.	15,000 lbs.	25,000 lbs.
Coil Diameter **	35-60 inch	35-60 inch	35-60 inch
Opening **	96 inch	96 inch	96 inch
Stroke **	84 inch	84 inch	84 inch
Power	7.5 H.P.	30 H.P.	50 H.P.
Height *	84 inches	84 inches	84 inches
Overall Length *	240 inches	240 inches	240 inches

‘\*’ = Approximate – varies with opening and coil diameter

‘\*\*’ = Modified to suit customer needs

Note: All information subject to change without notice.

### Corporate Headquarters

Vale Industries Inc.  
122 Simonds Ave.,  
DeKalb, Illinois 60115-3992  
Phone: (815) 756-2426  
Fax: (815) 756-2735  
E-mail: [info@vale-industries.com](mailto:info@vale-industries.com)  
[www.vale-industries.com](http://www.vale-industries.com)

### International Division

Vale Industries Inc.  
115 S. 4<sup>th</sup> Avenue.  
St. Charles, Illinois 60174-2145  
Phone: (630) 584-1900  
Fax: (630) 584-2599



## Upset Testers



**Vale sets the standards for quick, accurate testing that stops scrap fast.**

### Quick Results

Vale cycle times of less than 4 seconds to shear and 5 seconds to upset gives you the fastest quality control answers possible. This typical sample was sheared square and to a length 1.3 times the diameter. It was then upset to 40% of its original length for visual inspection. (Vale upset testers are also available for D.I.N. standard tests.) For greater quality control flexibility, you can vary the upset parameters with convenient hand knob adjustments.

### Accurate, economical operation.

Accuracy is assured by precise controls that govern the length of the sheared samples and the amount of upset.



Tooling is light-weight and of unitized design for easy and fast change. Anvils are reversible, need for fewer resharpenings. Vale's foolproof system for aligning dies eliminates improper operation.

### Famous Vale reliability

For longer component life, all Vale Upset Testers are rated to 5,000 PSI, yet operate at only 4,500 PSI.

Upper and lower upset plattens are made of hardened tool steel to ensure quality samples and long life. Both plattens are identical and interchangeable by means of locking collars.

MODEL	CAPACITY DIA.	SHEAR STRENGTH PSI @	HEIGHT	WIDTH	DEPTH	WEIGHT APPROX.	RAM SPEED	POWER	STARTER
VU1-D1528	1.00"	60,000	71"	48"	30"	1,800lbs.	45"/min	7.5 HP	Comb Magnetic
VU2-D1530	1.50"	60,000	75"	52"	40"	5,000lbs.	90"/min	40 HP	Comb Magnetic
VU3-D1531	2.00"	60,000	93"	72"	66"	10,500lbs.	50"/min	80 HP	Comb Magnetic
VU4-D1691	2.50"	60,000	100"	96"	96"	15,000lbs.	50"/min	120 HP	Comb Magnetic
VU5-D1673	3.00"	60,000	104"	117"	113"	25,000lbs.	50"/min	200 HP	Comb Magnetic
VU6-D1692	3.50"	60,000	110"	125"	132"	32,000lbs.	50"/min	250 HP	Comb Magnetic

### Corporate Headquarters

Vale Industries Inc.  
122 Simonds Ave.,  
DeKalb, Illinois 60115-3992  
Phone: (815) 756-2426  
Fax: (815) 756-2735  
E-mail: [info@vale-industries.com](mailto:info@vale-industries.com)  
[www.vale-industries.com](http://www.vale-industries.com)

### International Division

Vale Industries Inc.  
115 S. 4<sup>th</sup> Avenue.  
St. Charles, Illinois 60174-2145  
Phone: (630) 584-1900  
Fax: (630) 584-2599



## Tensile Test Sample Punch

### Vale innovation at work again. First in line to solve the tensile test sample production constraints.

Vale Industries has broken the mold again. Realizing the need for a quicker and more cost effective way to produce samples for tensile testing, we have developed a range of machines to produce these samples in a fraction of the time it would take to use the traditional milling method. The standard punches and dies are designed to produce a burr free sample ready testing immediately. A range of 2 to 4 punches will cover the material thickness' specified and produce ASTM standard samples. All punches and dies can be sharpened easily on a standard surface grinder.



### Vale gives you more:

- Cuts up to 1/2" (12.5mm) thick
- Cuts in minimal time (Less than 12 seconds)
- More economical than machining
- Fast burr free samples
- Integral power unit
- Rugged Vale construction
- Safety guards
- Quick change punches
- PLC controlled
- Foot switch operated

MODEL	CAPACITY	FORCE Tons	WEIGHT	HEIGHT	DEPTH	WIDTH
VMD-30 X	.025-.19" .6-4.8mm	30	2500lbs. 1130Kg.	58" 1470mm	26" 680mm	45" 1140mm
VMD-85 X	.025-.375" .6-9.5mm	85	3500lbs. 1500Kg.	73" 1850mm	26" 680mm	45" 1140mm
VMD-125 X	.025-.500" .6-12.5mm	125	4500lbs. 2050Kg.	80" 2025mm	26" 680mm	45" 1140mm
VMD-250 X	.025-.500" .6-12.5mm	250	8000lbs. 3633Kg.	90" 2275mm	26" 680mm	45" 1140mm

Note: All information subject to change without notice

### Corporate Headquarters

Vale Industries Inc.  
122 Simonds Ave.,  
DeKalb, Illinois 60115-3992  
Phone: (815) 756-2426  
Fax: (815) 756-2735  
E-mail: [info@vale-industries.com](mailto:info@vale-industries.com)  
[www.vale-industries.com](http://www.vale-industries.com)

### International Division

Vale Industries Inc.  
115 S. 4<sup>th</sup> Avenue.  
St. Charles, Illinois 60174-2145  
Phone: (630) 584-1900  
Fax: (630) 584-2599